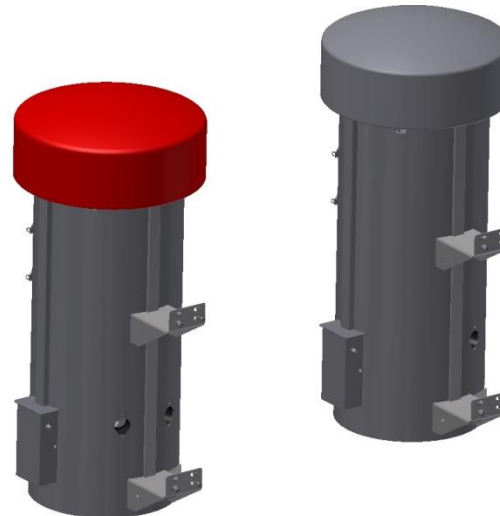
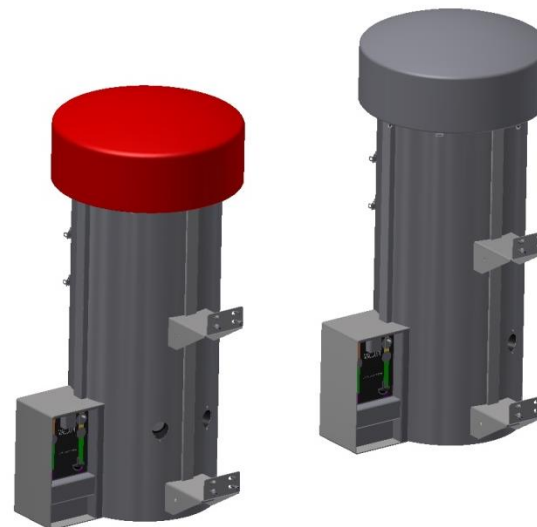




Models- 9217, 9218 Coin Operated & 9237 Push button
Dual and Single Hose, Post Mount Vacuums

| | |
|------------|-------------------------------|
| Page 2 | Product Information |
| Page 3-4 | Product Dimensions |
| Page 5 | Specifications |
| Page 6 | Important Safety Instructions |
| Page 6-8 | Installation |
| Page 9-10 | Programming |
| Page 10 | Operating |
| Page 10 | Maintenance |
| Page 11 | Troubleshooting |
| Page 12-19 | Parts List |
| Page 20-21 | Wiring Diagram |



PRODUCT INFORMATION

Please take a moment to fill out the information below in order to aid us with any future sales or service inquiries. Model number and serial number information can be found on the serial tag located inside the control box and/or on the lower exterior of the can. Key number can be found on the tag that comes attached to the keys. There may be more than one key number depending on unit.

Please keep this information with your records.

MODEL#: _____

SERIAL#: _____

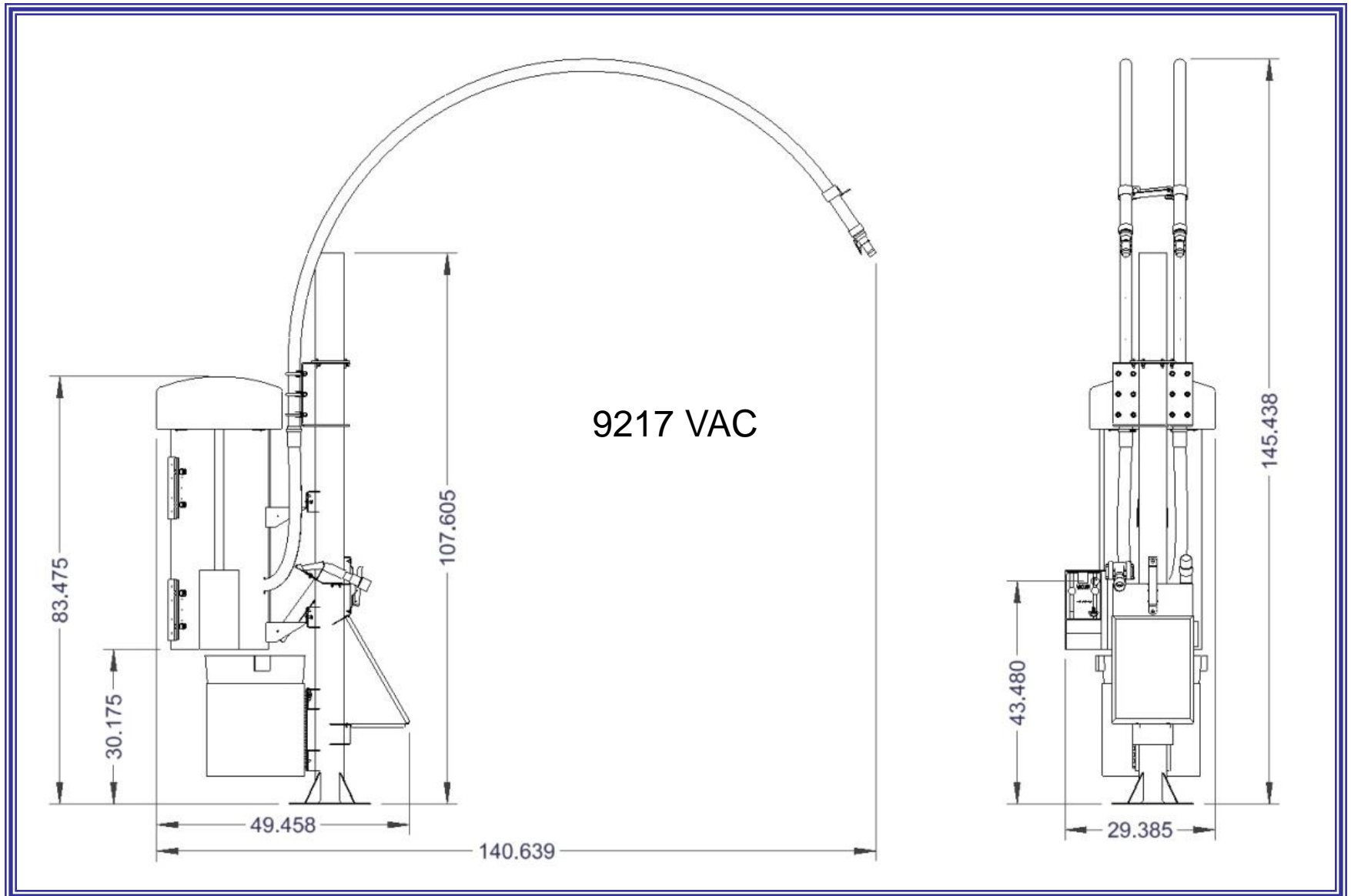
KEY NUMBER(S): _____

DATE PURCHASED: _____

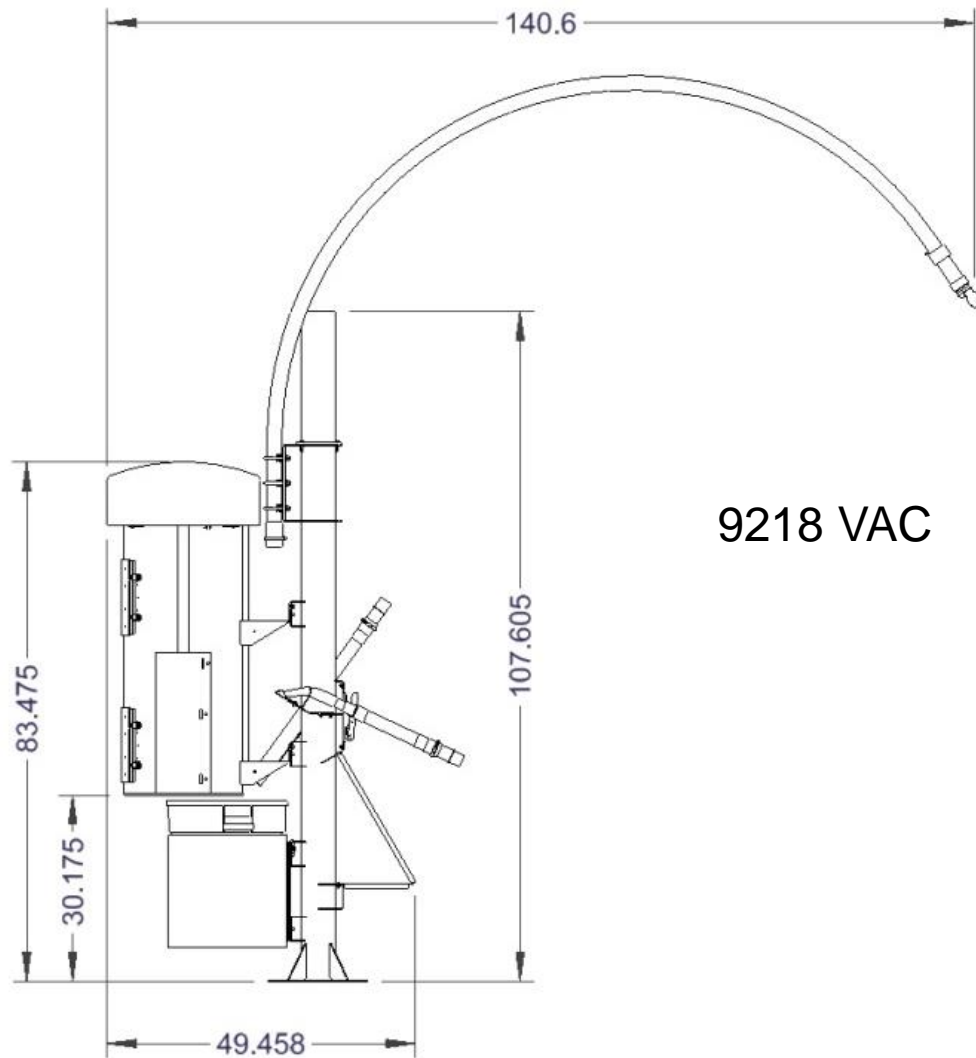
DISTRIBUTOR: _____

**J.E. Adams Industries
1025 63rd Ave. S.W.
Cedar Rapids, IA 52404
1-800-553-8861
www.jeadams.com**

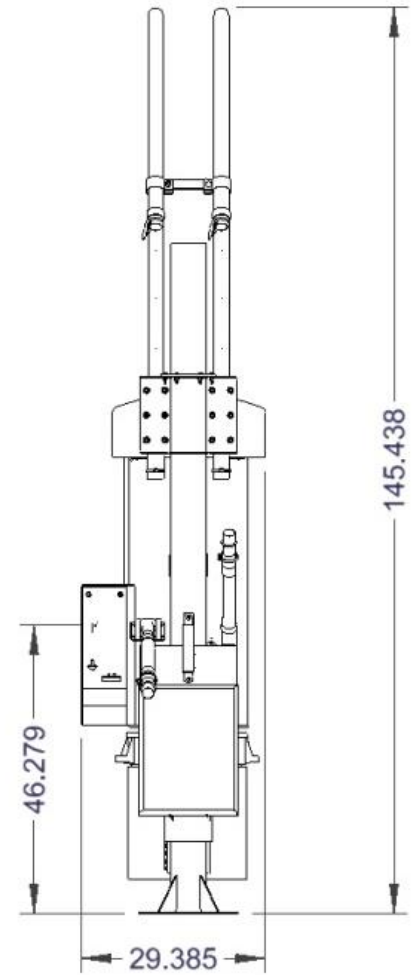
PRODUCT DIMENSIONS



PRODUCT DIMENSIONS



9218 VAC



Specifications

Unit specifications: 3 MOTOR VACUUMS

Voltage: 120vac, 60hz

Amperage: (1) 30 amp service is required for this unit.

Weight: 140lbs with pallet attached.

Vac specifications:

Motors: (3) 120vac vacuum motors.

Fuses: (3) 10 amp inline fuses.

Duty cycle time 4 minutes on, 4 minutes off.

NOTE: "UNIT INTENDED FOR COMMERCIAL USE ONLY"

IMPORTANT SAFETY INSTRUCTIONS

When using an electrical appliance, basic precautions should always be followed, including the following:

READ ALL INSTRUCTIONS BEFORE USING (THIS APPLIANCE)

WARNING – To reduce the risk of fire, electric shock, or injury:



- Do not use on wet surfaces.
- Use only as described in manual. Use only manufactures recommended attachments.
- Do not allow to be used as a toy. Close attention is necessary when used by or near children.
- Do not put any object into openings. Do not use with any opening blocked; keep free of dust, lint, hair and anything that may reduce air flow.
- Keep hair, loose clothing, fingers, and all parts of body away from openings and moving parts.
- Do not use to pick up flammable or combustible liquids, such as gasoline, or use in areas where they may be present.
- Do not pick up anything that is burning or smoking, such as cigarettes, matches, or hot ashes.
- Do not use without dust bag and/or filters in place.

SAVE THESE INSTRUCTIONS

- **Installation Instructions:**
- Determine location to mount unit (“**DANGER**” “**THIS EQUIPMENT INCORPORATES PARTS SUCH AS SWITCHES, MOTORS, OR THE LIKE THAT TEND TO PRODUCE ARCS OR SPARKS THAT CAN CAUSE AN EXPLOSION. WHEN LOCATED IN GASOLINE-DISPENSING AND SERVICE STATIONS INSTALL AND USE AT LEAST 20 FEET (6 M) HORIZONTALLY FROM THE EXTERIOR ENCLOSURE OF ANY DISPENSING PUMP AND AT LEAST 18 INCHES (450 MM) ABOVE A DRIVEWAY OR GROUND LEVEL.**”
- Run electrical service to that location (*NOTE UNIT HAS WIRE PROVIDED UNDERNEATH TO CONNECT INCOMING POWER SUPPLY*)
- **Grounding Instructions:** This appliance must be connected to a grounded metal, permanent wiring system; or an equipment-grounding conductor must be run with the circuit conductors and connected to the equipment-grounding terminal or lead on the appliance.
- **Circuit must be protected by GFCI device.**
- All local and national electric codes must be followed for installation and use.
- Licensed electricians are recommended for installation.

Attach vacuum can to post using supplied (8) 3/8 Torx Security bolts (T45 security tip not provided). **Vacuum is heavy!! Use assistance!**

35000-11A post pictured

Vacuum is mounted to upper set of holes in the upper two brackets on the stanchion.

Vacuum hose installation:
1) Cut vacuum hoses to desired lengths (not too tight, not excess slack, leave a gradual bend).
2) Thread ends into vacuum can (counterclockwise).
3) Thread hose into grey couplers and attach to arch using hose clamp.

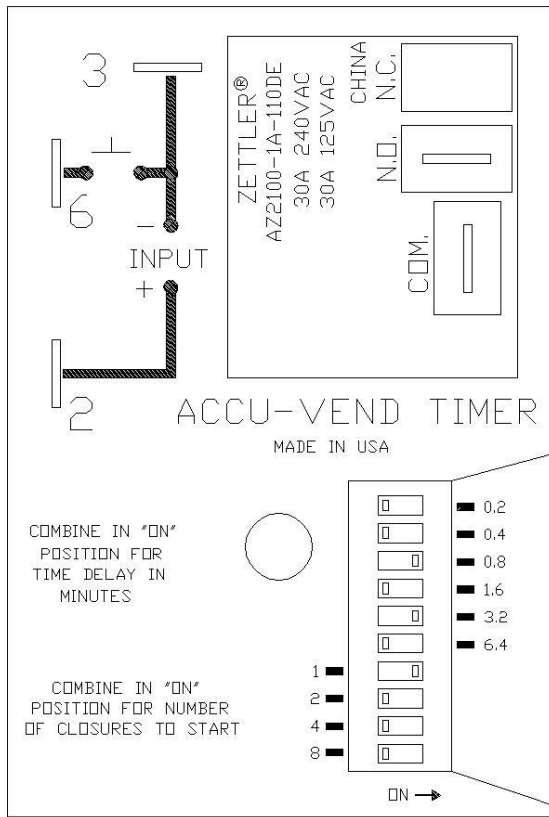
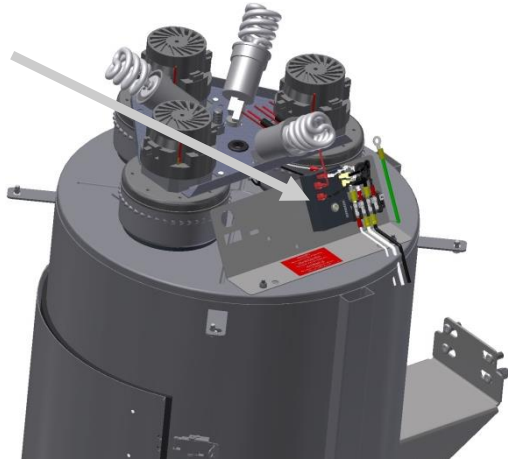


Remove cover and make conduit connection at hole provided (seal tite type fitting not provided). Tie into factory electrical at this location.

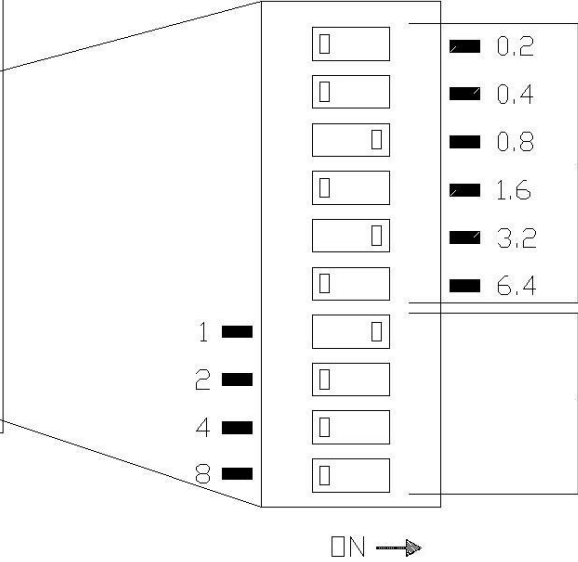
Programming:

JE Adams post mount vacuums come with non accumulating timers. If offering a free vacuum with a push button start, number of coins will be set to 1. If using a coin mechanism, select whatever combination of coins from 1-15 quarters. A typical vend time would be 4 minutes (240 seconds) which requires dip switches 3.2 and .8 to be set to "on." Again, since this a non accumulating timer, there is no calculation for time per coin.

Timer is located under dome.



- Time in minutes dip switch settings:
- 0.2 = 12 seconds
 - 0.4 = 24 seconds
 - 0.8 = 48 seconds
 - 1.6 = 96 seconds
 - 3.2 = 192 seconds
 - 6.4 = 384 seconds



Total time
(non accumulating)

Coins to start

Bill acceptor:

Bill acceptor comes pre programmed from J.E. Adams and should not require any changes. If additional programming is needed to acceptors please refer to additional literature sent along with this unit.

Operating Instructions:

- Insert coin(s) into machine to start.
- In the case of a push button kit, press push button to activate machine. It will automatically shut off.
- Remove vacuum hose from hanger and vacuum subject accordingly. Do not vacuum wet objects or fine dust (ex – drywall dust).
- Return vacuum hose to hanger when finished.
- In the case of a dual hose model, hose claw must be returned to hanger and set against rubber pad to eliminate leaks in vacuum system. This will allow the opposite hose to have more suction while in use.

Maintenance:

- **All servicing of machine should be conducted by an authorized service representative!**
- Filter bags should be accessed and shaken down weekly. It is recommended to keep a new set of bags on hand.
- To maintain performance, empty dirt bin from the canister on a regular basis. This is very important!!
- Periodically inspect wires and connections for wear or fatigue.
- Check vac hose for cracks on a weekly basis.
- Clean canister with a stainless steel cleaner as needed. Decals can be cleaned with mild soap and water.
- Check motor brushes approx. every 3 months for excessive wear. Motor brushes should be changed if they are shorter than 3/8". ***Please disconnect power before doing this.***



DISCONNECT POWER BEFORE SERVICING OR TROUBLESHOOTING!



Troubleshooting: !DISCONNECT POWER BEFORE SERVICING OR TROUBLESHOOTING!

| Problem | Possible cause | Solution |
|------------------------------------|-------------------------------------------------------------------------------|-------------------------------------------------------------------------------------------------------------------|
| Unit is not powered. | Breaker inside fuse panel is not in the on position. | Turn breaker on. |
| | No power to machine. | Check incoming power line voltage. |
| | Loose connection. | Check incoming power connection. |
| Machine is behaving erratically. | Is the incoming power at 120V? | Check voltage and monitor while machine runs. Low voltage can cause erratic behavior. |
| | Are any of the machines wires worn through or connections not making contact? | Inspect wiring and connections. Look for sharp bends in wires and places where wire is against the metal chassis. |
| Unit keeps tripping breaker. | Inadequate wire size ran to machine. | Call electrician and install proper wire size for electrical service versus length or run. |
| | Wrong size breaker. | Install correct breaker (only if wire size is adequate to handle breaker). |
| Fuses for vac motors keep blowing. | Inadequate wire size ran to machine. | Call electrician and install proper wire size for electrical service versus length or run. |
| | Motor brushes may be bad or too short. | Replace motor brushes. |
| Lack of vacuum suction. | Vac hose clogged? | Clean debris from vac hose. |
| | Filter bags need cleaned or dirt chamber needs emptied? | Shake or clean filter bags or replace and empty lower dirt chamber. |
| | Vac hose is split? | Replace/repair vac hose. |
| | Cleanout door gaskets torn or worn? | Replace gaskets. |
| | Vac motor gaskets are worn or motor is not tight against. | Inspect/replace gaskets and assure motor is tight against them. |
| | Dual vac hose unit, both hoses are being used. | When both hoses are being used, suction will be lower. Double check all 3 motors are working however. |
| | Lower chamber cap plugs/mounting hole covers have popped out? | Open lower chamber and inspect plugs, order new if needed. |
| | Cleanout door gaskets torn or worn? | Replace gaskets. |
| | One of the vac motors is not working? | Check line motor fuse and replace. Replace motor if necessary. |

PART NO.

9217

BILL OF MATERIALS


| ITEM | PART NUMBER | DESCRIPTION | QTY |
|------|----------------------------------|------------------------------|-----|
| 46 | 9217 3 MOTOR_SSAC_8149 IMONEX | WIRING DIAGRAM | X |
| 47 | 9900-6A | BRACKET COVER ASSEMBLY | 1 |
| 48 | B5722-002 | NUT, 3/8-16 UNC HEX LOCK NUT | 4 |
| 49 | B5996-010 | FUSE, GLR SERIES, 10AMP | 3 |
| 50 | B5997-001 | FUSE HOLDER, 10A MAX | 3 |

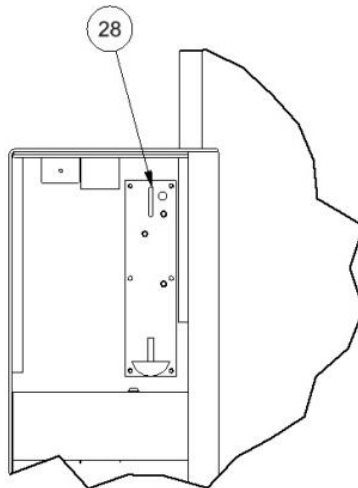
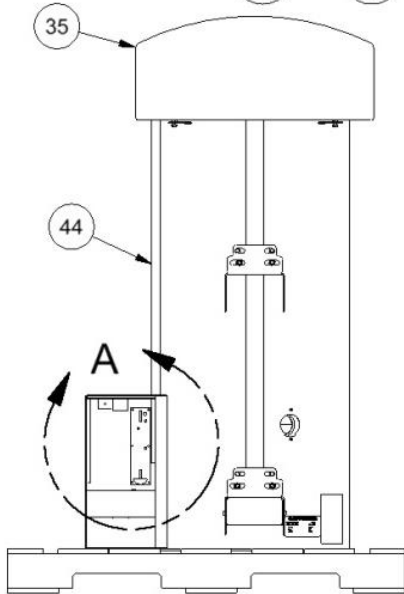
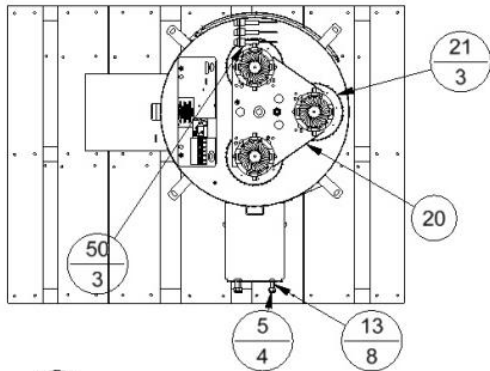


BILL OF MATERIALS

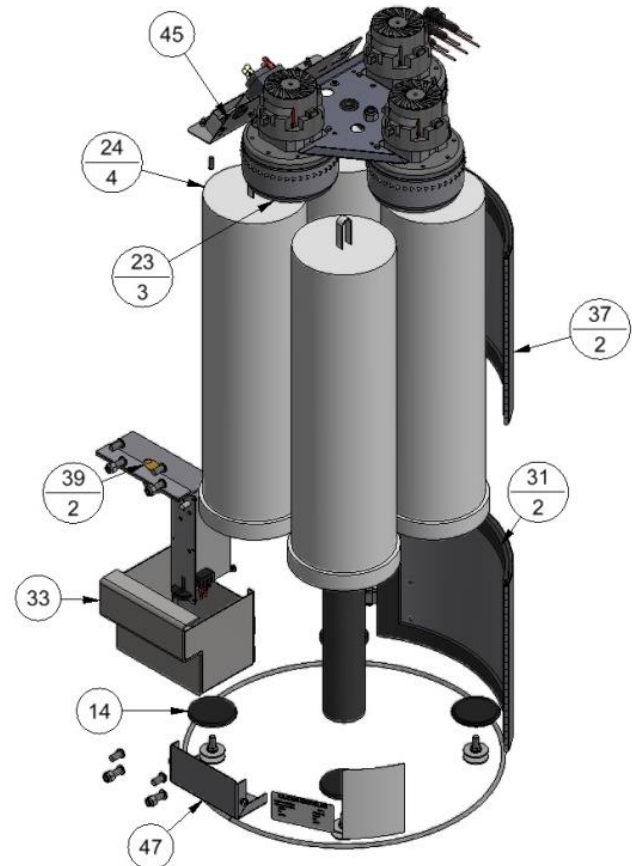
| ITEM | PART NUMBER | DESCRIPTION | QTY |
|------|-------------|--------------------------------------------------------|-----|
| 1 | 2036 | HOSE, 2" X 15' BLACK VACUUM | 1 |
| 2 | 5600D4 | 3/8-16 X 1.5 HHCS | 4 |
| 3 | 5603D1 | 10-24 Std NC Nylock Nut | 3 |
| 4 | 5603D11 | 1/2 Std NF Nylock Nut | 1 |
| 5 | 5603D3 | 3/8 Std NC Nylock Nut | 4 |
| 6 | 5606D22 | WASHER, 3/8 FENDER | 8 |
| 7 | 5606D7 | FLAT WASHER, .160 ID X .500 OD | 1 |
| 8 | 5627D2 | 6-32 x .63 PD, PH, MS | 1 |
| 9 | 5639D1 | RUBBER GROMMET | 1 |
| 10 | 5640D1 | 1/4-20 x 1/2 PHIL PAN HEAD SCREW | 2 |
| 11 | 5647D2 | 1/8 SS POP RIVET | 16 |
| 12 | 5647D8 | 3/16 SS POP RIVET | 14 |
| 13 | 5702D6 | 3/8-16 X .75 TORX SEC. T-45 | 8 |
| 14 | 5871b8 | PLUG, VAC BOTTOM 2-1/2" | 8 |
| 15 | 5900D5 | TERM, F SPADE, 3/16, 22-18 AWG INS. | 2 |
| 16 | 5901D1 | WIRE NUT, YELLOW | 1 |
| 17 | 5901D2 | WIRE NUT, RED | 2 |
| 18 | 6082 | BAG, 9 X 12 | 1 |
| 19 | 8047 | BAG, 60 X 72 | 1 |
| 20 | 8051-3M | 3 MOTOR BRACKET | 1 |
| 21 | 8055EM | MOTOR, ELECTRO 120V | 3 |
| 22 | 8055LEAD-EM | WIRE LEAD, EM VAC MOTOR | 6 |
| 23 | 8057 | MOTOR GASKET | 3 |
| 24 | 8076 | FILTER BAG | 4 |
| 25 | 8081 | CABLE TIE MOUNT | 3 |
| 26 | 8084 | CABLE TIE | 8 |
| 27 | 8108 | #10 x 1/2 TAP SCREW | 6 |
| 28 | 8149 | IMONEX COIN ACCEPTOR | 1 |
| 29 | 8153-1 | LATCH, CLEANOUT DOOR | 4 |
| 30 | 8157 | NUT, #6-32 KEPP NUT STAINLESS | 5 |
| 31 | 8159 | DOOR GASKET | 2 |
| 32 | 8183 | DECAL, "DISCONNECT POWER" | 1 |
| 33 | 8204RW | COIN BOX, PIN LOCK WELDMENT | 1 |
| 34 | 8211RW | FACEPLATE WELDMENT, R.H | 1 |
| 35 | 8305 | ASSEMBLED SS DOME | 1 |
| 36 | 8427-1 | DECAL, CANISTER | 1 |
| 37 | 8615-5W | CLEANOUT DOOR WELDMENT | 2 |
| 38 | 8631 | 11 X 55 PAD FOR VACS | 1 |
| 39 | 8638 | PIN LOCK | 2 |
| 40 | 8732 | NAMEPLATE SERIAL TAG, UL | 1 |
| 41 | 8754 | DECAL, WARNING CANISTER | 1 |
| 42 | 8939 | PALLET, DUAL, OVAL, SPECIALITY, 30" X 40" | 1 |
| 43 | 9200FPD | DECAL, FACEPLATE | 1 |
| 44 | 9214W-2 | 3 MOTOR VAC CANISTER W/C, 3MTR, SNGL. HOSE, POST MOUNT | 1 |
| 45 | 9217SS5 | TIMER ASSEMBLY, CV POST MOUNT | 1 |

PAGE 1 OF 2


| C | 7723 | REMOVE 2081 COUPLER & 8061-720-8 CLAMP | 033016 | JF | TITLE 3 MOTOR VAC , 2 DOOR, SINGLE HOSE, POST MOUNT | | | | |
|---------------------------------------------------------------------------------------------------------------------------------------------------------|------|-------------------------------------------------------|--------|----|--------------------------------------------------------|----------|---------------------------------------------------------------------------------------|--------|------------|
| B | 7588 | REPLACE 5636D1 SCREWS WITH 5640D1, ADD WIRING DIAGRAM | 101315 | JF | UNSPECIFIED TOLERANCES | MATERIAL | CEDAR RAPIDS, IOWA | | |
| A | 7567 | CORRECT DECAL NUMBER | 091015 | JF | 1 PL ±.030 | SCALE |  | | |
| REV | NO. | DESCRIPTION | DATE | BY | 2 PL ±.010 | DRAWN BY | | | JOHN F |
| | | | | | 3 PL ±.003 | DATE | | | 11/12/2014 |
| THIS DOCUMENT SHALL NOT BE REPRODUCED NOR SHALL THE INFORMATION THEREIN BE USED BY OR DISCLOSED TO OTHERS EXCEPT AS AUTHORIZED BY J.E. ADAMS INDUSTRIES | | | | | ANGLE ±1.0° | PART NO. | 9217 | REV. C | |



DETAIL A
SCALE .15



| REV | NO. | DESCRIPTION | DATE | BY |
|---------------------------------------------------------------------------------------------------------------------------------------------------------|-----|-------------|------|----|
| THIS DOCUMENT SHALL NOT BE REPRODUCED NOR SHALL THE INFORMATION THEREIN BE USED BY OR DISCLOSED TO OTHERS EXCEPT AS AUTHORIZED BY J.E. ADAMS INDUSTRIES | | | | |

| | | | |
|--------------------------------------------------------|-----------------|---------------------------------------------------------------------------------------|--------|
| TITLE 3 MOTOR VAC , 2 DOOR, SINGLE HOSE, POST MOUNT | | CEDAR RAPIDS, IOWA | |
| UNSPECIFIED TOLERANCES | MATERIAL |  | |
| 1 PL ±.030 | SCALE | | |
| 2 PL ±.010 | DRAWN BY JOHN F | | |
| 3 PL ±.003 | DATE 11/12/2014 | PART NO. 9217 | REV. C |
| ANGLE ±1.0° | | | |

PART NO. 9217LD-DH

| BILL OF MATERIALS | | | |
|-------------------|------------------------|-------------------------------|-----|
| ITEM | PART NUMBER | DESCRIPTION | QTY |
| 46 | 9217SS5 | TIMER ASSEMBLY, CV POST MOUNT | 1 |
| 47 | 9217 3 | WIRING DIAGRAM | X |
| | MOTOR_SSAC_8149 IMONEX | | |
| 48 | 9900-6A | BRACKET COVER ASSEMBLY | 1 |
| 49 | B5722-002 | NUT, 3/8-16 UNC HEX LOCK NUT | 4 |
| 50 | B5996-010 | FUSE, GLR SERIES, 10AMP | 3 |
| 51 | B5997-001 | FUSE HOLDER, 10A MAX | 3 |


| BILL OF MATERIALS | | | |
|-------------------|-------------|-------------------------------------------------------|-----|
| ITEM | PART NUMBER | DESCRIPTION | QTY |
| 1 | 2036 | HOSE, 2" X 15' BLACK VACUUM | 1 |
| 2 | 5600D4 | 3/8-16 X 1.5 HHCS | 4 |
| 3 | 5601D13 | SCR, 1/4-20x1/2 PPHSqConeStepZP | 4 |
| 4 | 5603D1 | 10 Std NC Nylock Nut | 2 |
| 5 | 5603D11 | 1/2 Std NF Nylock Nut | 1 |
| 6 | 5603D3 | 3/8 Std NC Nylock Nut | 4 |
| 7 | 5606D22 | WASHER, 3/8 FENDER | 8 |
| 8 | 5606D7 | FLAT WASHER, .160 ID X .500 OD | 1 |
| 9 | 5627D2 | 6-32 x .63 PD, PH, MS | 1 |
| 10 | 5640D1 | 1/4-20 x 1/2 PHIL PAN HEAD SCREW | 2 |
| 11 | 5647D2 | 1/8 SS POP RIVET | 16 |
| 12 | 5647D8 | 3/16 SS POP RIVET | 14 |
| 13 | 5702D6 | 3/8-16 X .75 TORX SEC. T-45 | 8 |
| 14 | 5871b8 | PLUG, VAC BOTTOM 2-1/2" | 8 |
| 15 | 5900D5 | TERM, F SPADE, 3/16, 22-18 AWG INS. | 2 |
| 16 | 5901D1 | WIRE NUT, YELLOW | 1 |
| 17 | 5901D2 | WIRE NUT, RED | 2 |
| 18 | 6082 | BAG, 9 X 12 | 1 |
| 19 | 8047 | BAG, 60 X 72 | 1 |
| 20 | 8055EM | MOTOR, ELECTRO 120V | 3 |
| 21 | 8055LEAD-EM | WIRE LEAD, EM VAC MOTOR | 6 |
| 22 | 8057 | MOTOR GASKET | 3 |
| 23 | 8076 | FILTER BAG | 4 |
| 24 | 8081 | CABLE TIE MOUNT | 3 |
| 25 | 8084 | CABLE TIE | 8 |
| 26 | 8108 | #10 x 1/2 TAP SCREW | 6 |
| 27 | 8149 | IMONEX COIN ACCEPTOR | 1 |
| 28 | 8153-1 | LATCH, CLEANOUT DOOR | 4 |
| 29 | 8157 | NUT, #6-32 KEPP NUT STAINLESS | 5 |
| 30 | 8159 | DOOR GASKET | 2 |
| 31 | 8183 | DECAL, "DISCONNECT POWER" | 1 |
| 32 | 8204RW | COIN BOX, PIN LOCK WELDMENT | 1 |
| 33 | 8211RW | FACEPLATE WELDMENT, R.H | 1 |
| 34 | 8306 | 24" PLASTIC DOME | 1 |
| 35 | 8427-1 | DECAL, CANISTER | 1 |
| 36 | 8543K-3 | 3 MOTOR LIGHT KIT | 1 |
| 37 | 8615-5W | CLEANOUT DOOR WELDMENT | 2 |
| 38 | 8631 | 11 X 55 PAD FOR VACS | 1 |
| 39 | 8638 | PIN LOCK | 2 |
| 40 | 8732 | NAMEPLATE SERIAL TAG, UL | 1 |
| 41 | 8754 | DECAL, WARNING CANISTER | 1 |
| 42 | 8925 | FLOURESCENT BULB | 3 |
| 43 | 8939 | PALLET, DUAL, OVAL, SPECIALITY, 30" X 40" | 1 |
| 44 | 9200FPD | DECAL, FACEPLATE | 1 |
| 45 | 9214W-DH | 3 MOTOR VAC CANISTER W/C, 3MTR, DUAL HOSE, POST MOUNT | 1 |

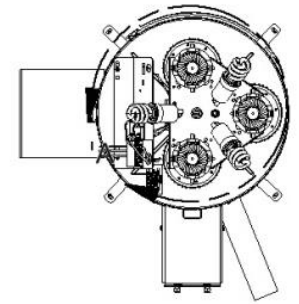
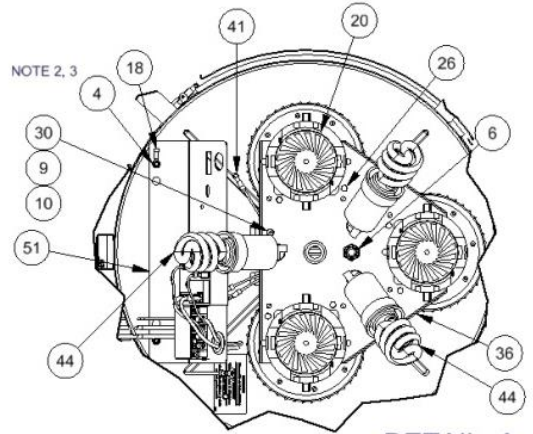
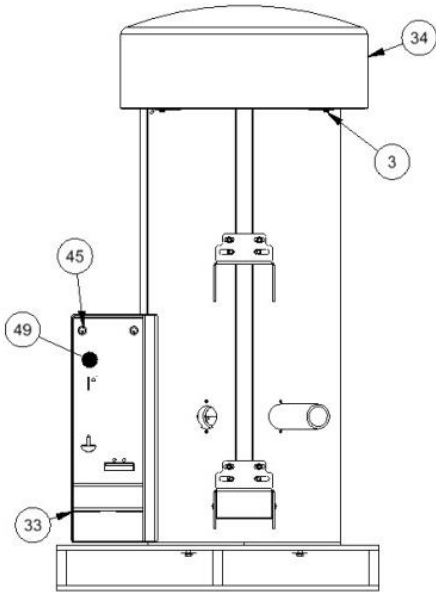


PAGE 1 OF 2

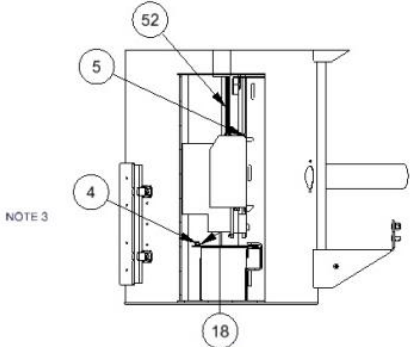
| REV | NO. | DESCRIPTION | DATE | BY |
|-----|------|------------------------------------------------|--------|----|
| C | 7723 | REMOVE 2081 COUPLER & 8061-720-8 CLAMP | 033016 | JF |
| B | 7588 | REPLACE 5636D1 WITH 5640D1, ADD WIRING DIAGRAM | 101315 | JF |
| A | 7567 | CORRECT DECAL PART NUMBER | 091015 | JF |

THIS DOCUMENT SHALL NOT BE REPRODUCED NOR SHALL THE INFORMATION THEREIN BE USED BY OR DISCLOSED TO OTHERS EXCEPT AS AUTHORIZED BY J.E. ADAMS INDUSTRIES

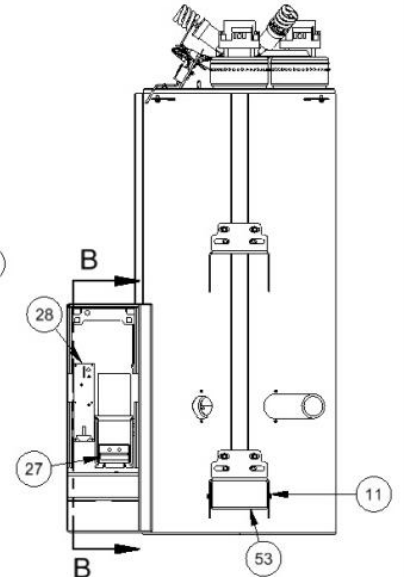
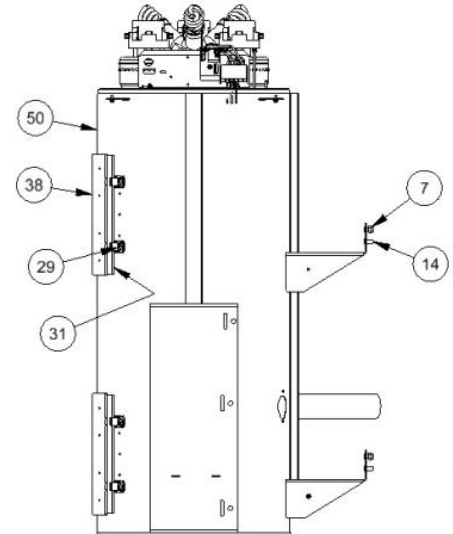
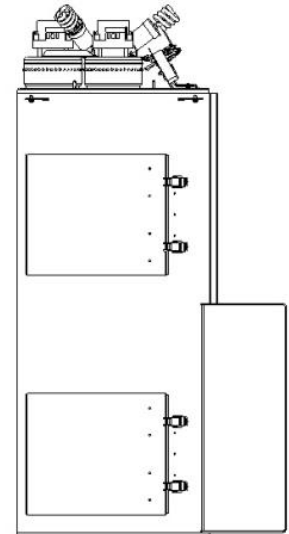
| TITLE | | | |
|---------------------------------------------|--------------------|---------------------------------------------------------------------------------------|--|
| 3 MOTOR VAC , 2 DOOR, DUAL HOSE, POST MOUNT | | | |
| UNSPECIFIED TOLERANCES | MATERIAL | CEDAR RAPIDS, IOWA | |
| 1 PL ±.030 | SCALE |  | |
| 2 PL ±.010 | DRAWN BY JOHN F | | |
| 3 PL ±.003 | DATE 11/12/2014 | | |
| ANGLE ±1.0° | PART NO. 9217LD-DH | REV. C | |



DETAIL A
SCALE 0.12 : 1



SECTION B-B
SCALE 0.06 : 1



| REV | NO. | DESCRIPTION | DATE | BY |
|-----|-----|-------------|------|----|
| | | | | |

THIS DOCUMENT SHALL NOT BE REPRODUCED NOR SHALL THE INFORMATION THEREIN BE USED BY OR DISCLOSED TO OTHERS EXCEPT AS AUTHORIZED BY J.E. ADAMS INDUSTRIES

| | | | |
|------------------------|--|---------------------------------------|-------|
| TITLE | | VAC,2DR,3M,POST MNT, LEFT, BA, DH, LD | |
| UNSPECIFIED TOLERANCES | | MATERIAL | |
| 1 PL ± .030 | | CEDAR RAPIDS, IOWA | |
| 2 PL ± .020 | | DRAWN BY | |
| 3 PL ± .003 | | DATE | |
| | | 1/29/2016 | |
| | | SCALE | SHEET |
| | | 0.06 : 1 | 2 / 2 |
| | | PART NO | REV. |
| | | 9218LD-DH | B |

PART NO. 9218LD-DH

NOTES:
 1. ROUTE (3) 10GA WIRES (BLK, WHT, GRN) DOWN WIRE CHASE, COIL WIRES UNDER COVER.
 2. GREEN 10GA WIRE (PART OF ITEM 32) SECURE UNDER ITEM 9.
 3. GREEN/YELLOW WIRE (ITEM 47) WITH ITEM 39 CRIMPED ON ENDS, GROUND WIRE BETWEEN BOTTOM CONTROL BOX AND UPPER TIMER ASSEMBLY.
 4. SEE 9218-PBKIT FOR SUPPLIMENTAL PARTS TO ADD KEYED FREE VEND OPTION.
 5. SEE S9218-CM-BA FOR SCHEMATIC.
 6. SLIDE LOCK BAR AVAILABLE, SEE 8206-BEL.



△ C

| BILL OF MATERIALS | | | | BILL OF MATERIALS | | | |
|-------------------|-----------------|------------------------------------|-----|-------------------|-------------------|-------------------------------------|-----|
| ITEM | PART NUMBER | DESCRIPTION | QTY | ITEM | PART NUMBER | DESCRIPTION | QTY |
| 36 | 8543K-3 | 3 MOTOR LIGHT KIT | 1 | 1 | 2036 ^A | HOSE, 2" X 15' BLACK VACUUM | 1 |
| 37 | 8605-2 | PALLET, VAC, 32" X 34" | 1 | 2 | 5600D4 | 3/8-16 X 1.5 HHCS | 4 |
| 38 | 8615-5W | CLEANOUT DOOR WELDMENT | 2 | 3 | 5601D13 | SCR, 1/4-20x1/2 PPHSqConeStepZP | 4 |
| 39 | 8630 | BOX, 34 X 32 X 60-1/8 | 1 | 4 | 5603D1 | 10-24 Std NC Nylock Nut | 3 |
| 40 | 8638 | PIN LOCK | 1 | 5 | 5603D10 | NUT NYLOCK, #6-32, SS | 9 |
| 41 | 8673-11 | GROUND WIRE 28" | 1 | 6 | 5603D11 | 1/2 Std NF Nylock Nut | 1 |
| 42 | 8732 | NAMEPLATE, PRODUCT SPECS | 1 | 7 | 5603D3 | 3/8 Std NC Nylock Nut | 4 |
| 43 | 8754 | WARNING DECAL | 1 | 8 | 5606D22 | WASHER, 3/8 FENDER | 8 |
| 44 | 8925 | FLOURESCENT BULB | 3 | 9 | 5606D7 | FLAT WASHER, .160 ID X .500 OD | 1 |
| 45 | 8953 | MEDECO CAM LOCK W/2 KEYS | 2 | 10 | 5627D2 | 6-32 x .63 PD, PH, MS | 1 |
| 46 | 9200-D1-1-10 | DECAL, FACEPLATE | 1 | 11 | 5640D1 | 1/4-20 x 1/2 PHIL PAN HEAD SCREW | 2 |
| 47 | 9200-D1-1-10-BA | DECAL, INSERT BILL | 1 | 12 | 5647D2 | 1/8" SS POP RIVET | 16 |
| 48 | 8400-1 | DECAL PRICING CIRCLE SET YEL | 1 | 13 | 5647D8 | 3/16" SS POP RIVET | 14 |
| 49 | 9209-2W | FACEPLATE WELDMENT, SHAMPOO | 1 | 14 | 5702D6 | 3/8-16 X .75 TORX SEC. T-45 | 8 |
| 50 | 9214W-3DH | VAC CAN WMT, 3M, DH, POST MNT | 1 | 15 | 5871b8 | PLUG, VAC BOTTOM 2-1/2" | 5 |
| 51 | 9217SS5 | TIMER ASSEMBLY, CV POST MOUNT | 1 | 16 | 5900D5 | TERM, F SPADE, 3/16, 22-18 AWG INS. | 2 |
| 52 | 9500-56L | CABLE ASY, BILL ACCEPTOR, 66" EXT. | 1 | 17 | 5901D1 | WIRE NUT, TWIST, YELLO | 4 |
| 53 | 9900-6A | BRACKET COVER ASSEMBLY | 1 | 18 | 5902D1 | TERM, RING, #10, 14-16AWG, INS. | 2 |
| 54 | B5722-002 | NUT, 3/8-16 UNC HEX LOCK NUT | 4 | 19 | 5943D322C | WIRE, 14 AWG, MTW, 90C, GRN/YLW | 48" |
| 55 | B5996-010 | FUSE, GLR SERIES, 10AMP | 3 | 20 | 8055EM | MOTOR, ELECTRO 120V | 3 |
| 56 | B5997-001 | FUSE HOLDER, 10A MAX | 3 | 21 | 8055LEAD-EM | WIRE LEAD, EM VAC MOTOR | 6 |
| | | | | 22 | 8057 | MOTOR GASKET | 3 |
| | | | | 23 | 8076 | FILTER BAG | 4 |
| | | | | 24 | 8081 | CABLE TIE DOWN, SELF ADHESIVE | 1 |
| | | | | 25 | 8089 | CABLE CLAMP, PLASTIC, 1/2" ID | 1 |
| | | | | 26 | 8108 | #10 x 1/2 TAP SCREW | 6 |
| | | | | 27 | 8130-6 | MEI MARS, 110V BILL VALIDATOR | 1 |
| | | | | 28 | 8149 | IMONEX COIN ACCEPTOR | 1 |
| | | | | 29 | 8153-1 | LATCH, CLEANOUT DOOR | 4 |
| | | | | 30 | 8157 | NUT, #6-32 KEPP NUT STAINLESS | 1 |
| | | | | 31 | 8159 | DOOR GASKET | 2 |
| | | | | 32 | 8183 | DECAL, "DISCONNECT POWER" | 1 |
| | | | | 33 | 8204RW | COIN BOX, PIN LOCK WELDMENT | 1 |
| | | | | 34 | 8306 | 24" PLASTIC DOME | 1 |
| | | | | 35 | 8427-1 | DECAL, CANISTER | 1 |

| | | | | |
|-----|------|---------------------------------------------------------------------|----------|-----|
| C | 8247 | REPLACED 9500-56 WITH -56L | 4/24/18 | MWS |
| B | 7857 | REPLACE 9200FPD WITH 8400-1 AND 8424-1 WITH 8427-1 | 10/6/16 | MWS |
| A | 7760 | CHANGE MODEL NOMENCLATURE, WAS 9218DHL, REMOVE VAV CLAWS AND 1 HOSE | 05/06/16 | JRF |
| - | 7678 | RELEASED | 2/9/16 | MWS |
| REV | NO. | DESCRIPTION | DATE | BY |

TITLE: VAC,2DR,3M,POST MNT, LEFT, BA, DH, LD

UNSPECIFIED TOLERANCES: 1 PL ±.030, 2 PL ±.020, 3 PL ±.003, ANGLE ±1°

DATE: 1/29/2016

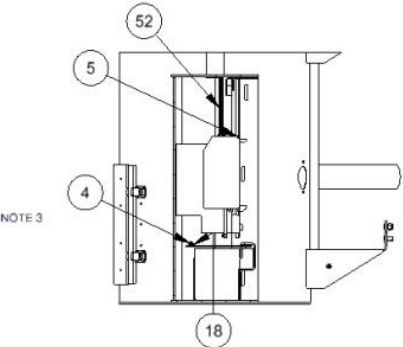
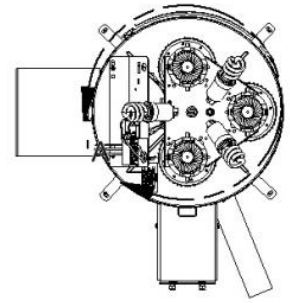
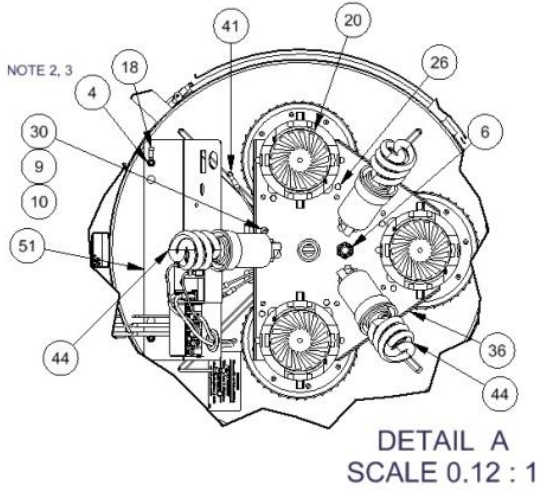
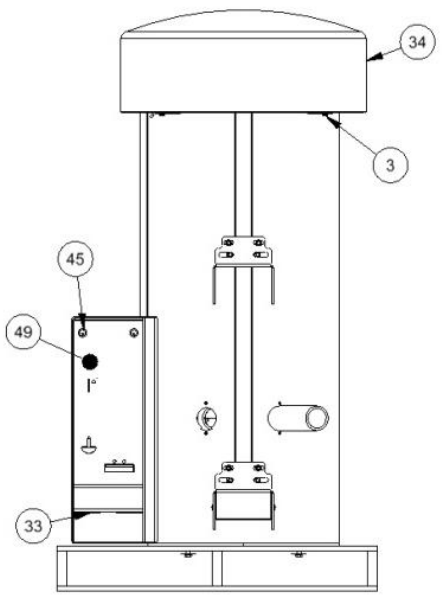
SCALE: 0.06 : 1

SHEET: 1 / 2

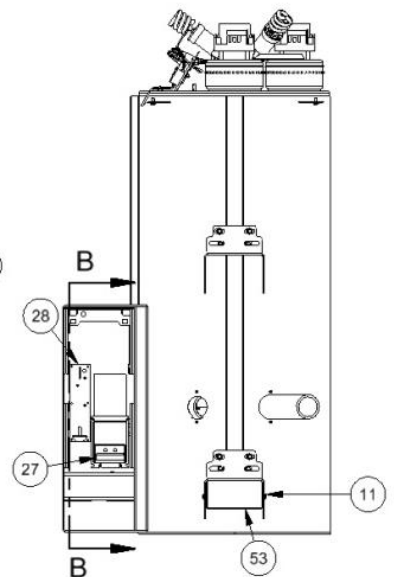
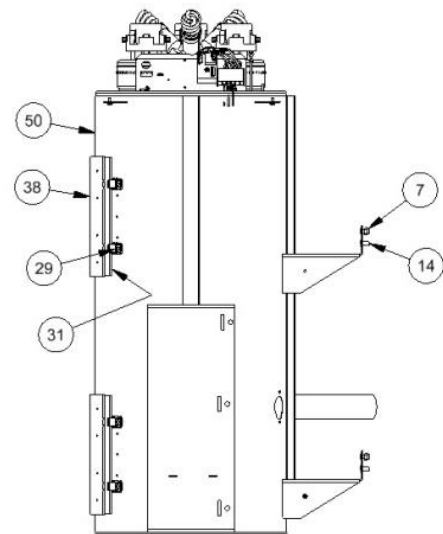
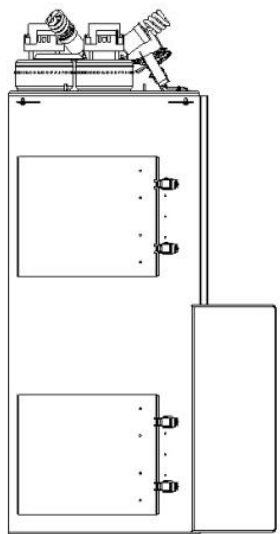
PART NO: 9218LD-DH

REV: C

THIS DOCUMENT SHALL NOT BE REPRODUCED NOR SHALL THE INFORMATION THEREIN BE USED BY OR DISCLOSED TO OTHERS EXCEPT AS AUTHORIZED BY J.E. ADAMS INDUSTRIES

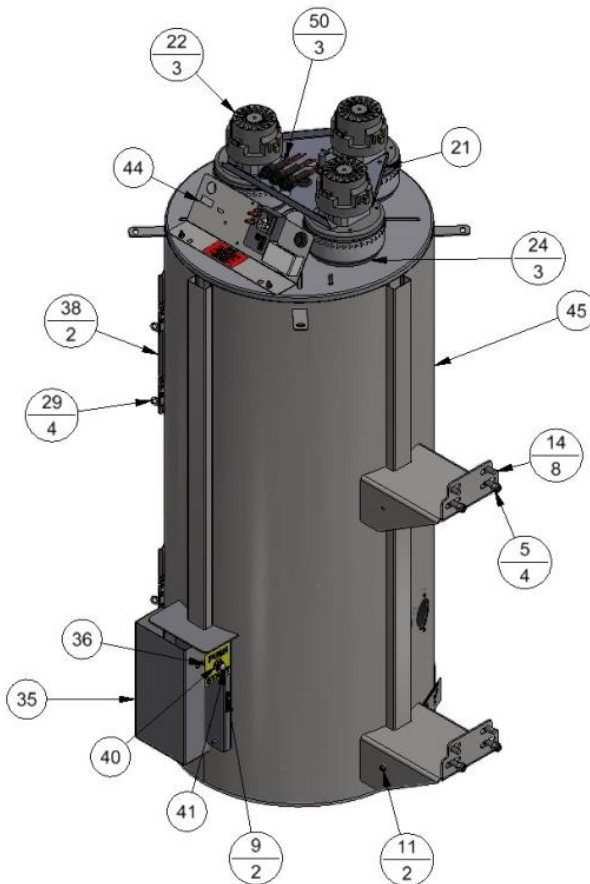


SECTION B-B
SCALE 0.06 : 1



| | | | |
|------------------------|----------|---------------------------------------|-----------|
| TITLE | | VAC,2DR,3M,POST MNT, LEFT, BA, DH, LD | |
| UNSPECIFIED TOLERANCES | | MATERIAL | |
| 1 PL ± .030 | DRAWN | CEDAR RAPIDS, IOWA | |
| 2 PL ± .020 | BY | | |
| 3 PL ± .003 | DATE | | |
| ANGLE ± 1° | SCALE | 1/29/2016 | REV. |
| | 0.06 : 1 | SHEET 2 / 2 | 9218LD-DH |
| | | PART NO. | C |

| REV | NO. | DESCRIPTION | DATE | BY |
|---------------------------------------------------------------------------------------------------------------------------------------------------------|-----|-------------|------|----|
| THIS DOCUMENT SHALL NOT BE REPRODUCED NOR SHALL THE INFORMATION THEREIN BE USED BY OR DISCLOSED TO OTHERS EXCEPT AS AUTHORIZED BY J.E. ADAMS INDUSTRIES | | | | |

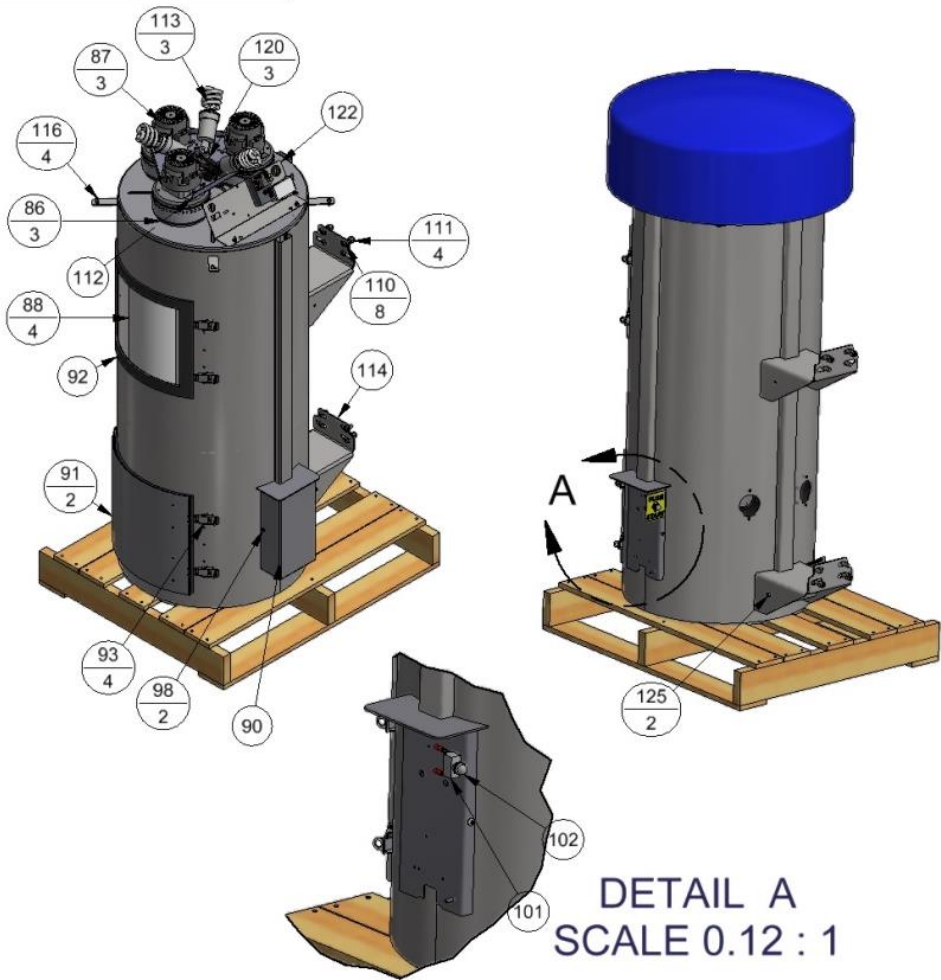


| | | BILL OF MATERIALS | |
|------|-----------------------------------------|--------------------------------------------------------|-----|
| ITEM | PART NUMBER | DESCRIPTION | QTY |
| 1 | 2036 | HOSE, 2" X 15' BLACK VACUUM | 1 |
| 2 | 5600D4 | 3/8-16 X 1.5 HHCS | 4 |
| 3 | 5603D1 | 10 Std NC Nylock Nut | 2 |
| 4 | 5603D11 | 1/2 Std NF Nylock Nut | 1 |
| 5 | 5603D3 | 3/8 Std NC Nylock Nut | 4 |
| 6 | 5606D22 | WASHER, 3/8 FENDER | 8 |
| 7 | 5606D7 | FLAT WASHER, .160 ID X .500 OD | 1 |
| 8 | 5627D2 | 6-32 x .63 PD, PH, MS | 1 |
| 9 | 5636D1 | #10-24 PHIL. PAN HEAD SCREW | 2 |
| 10 | 5639D1 | RUBBER GROMMET | 1 |
| 11 | 5640D1 | 1/4-20 x 1/2 PHIL PAN HEAD SCREW | 2 |
| 12 | 5647D2 | RIVET - 1/8 SS POP | 16 |
| 13 | 5647D8 | RIVET - 3/16 SS POP | 14 |
| 14 | 5702D6 | 3/8-16 X .75 TORX SEC. T-45 | 8 |
| 15 | 5871b8 | PLUG, VAC BOTTOM 2-1/2" | 8 |
| 16 | 5901D1 | WIRE NUT, YELLOW | 1 |
| 17 | 5901D2 | WIRE NUT, RED | 2 |
| 18 | 5905D1 | TERM. FORK, #6, 22-18 AWG, INS. | 2 |
| 19 | 6082 | BAG 9 X 12 | 1 |
| 20 | 8047 | PLASTIC BAG | 1 |
| 21 | 8051-3M | 3 MOTOR BRACKET | 1 |
| 22 | 8055EM | MOTOR, ELECTRO | 3 |
| 23 | 8055LEAD-EM | WIRE LEAD, EM VAC MOTOR | 6 |
| 24 | 8057 | MOTOR GASKET | 3 |
| 25 | 8076 | FILTER BAG | 4 |
| 26 | 8081 | CABLE TIE MOUNT | 3 |
| 27 | 8084 | CABLE TIE NYLON | 8 |
| 28 | 8108 | #10 x 1/2 TAP SCREW | 6 |
| 29 | 8153-1 | LATCH, CLEANOUT DOOR | 4 |
| 30 | 8157 | NUT, #6-32 KEPP NUT STAINLESS | 1 |
| 31 | 8159 | DOOR GASKET | 2 |
| 32 | 8183 | DECAL, "DISCONNECT POWER" | 1 |
| 33 | 8305 | ASSEMBLED SS DOME | 1 |
| 34 | 8427-1 | DECAL, VACUUM | 1 |
| 35 | 8505-7 | COVER, CONTROL PLATE | 1 |
| 36 | 8586BY | DECAL, PUSH TO START | 1 |
| 37 | 8605 | PALLET, VAC, 26" X 30.5" | 1 |
| 38 | 8615-5W | CLEANOUT DOOR WELDMENT | 2 |
| 39 | 8631 | 11 X 55 PAD | 1 |
| 40 | 8726 | PUSH BUTTON | 1 |
| 41 | 8727 | BOOT, RUBBER, PUSHBUTTON | 1 |
| 42 | 8732 | NAMEPLATE SERIAL TAG, UL | 1 |
| 43 | 8754 | DANGER DECAL | 1 |
| 44 | 9217SS5 | TIMER ASSEMBLY, CV POST MOUNT | 1 |
| 45 | 9236-3W-2 | 3 MOTOR VAC CANISTER W/C, 3MTR, SNGL. HOSE, POST MOUNT | 1 |
| 46 | 9237 3 MOTOR COMMERCIAL SSAC PUSH START | WIRING DIAGRAM | X |
| 47 | 9900-6A | BRACKET COVER ASSEMBLY | 1 |
| 48 | B5722-002 | NUT, 3/8-16 UNC HEX LOCK NUT | 4 |
| 49 | B5996-010 | FUSE, GLR SERIES, 10AMP | 3 |
| 50 | B5997-001 | FUSE HOLDER, 10A MAX | 3 |

| REV | NO. | DESCRIPTION | DATE | BY |
|---------------------------------------------------------------------------------------------------------------------------------------------------------|------|--------------------------------------------------|--------|----|
| C | 7723 | REMOVE 2081 COUPLER & 8061-720-8 CLAMP | 033016 | JF |
| B | 7586 | REPLACE (2) 5636D1 WITH 5640D1, ADD WIRING DIAG. | 101215 | JF |
| A | 7385 | REVISE TIMER PLATE ASSEMBLY | 020215 | JF |
| THIS DOCUMENT SHALL NOT BE REPRODUCED NOR SHALL THE INFORMATION THEREIN BE USED BY OR DISCLOSED TO OTHERS EXCEPT AS AUTHORIZED BY J.E. ADAMS INDUSTRIES | | | | |

| TITLE | | MATERIAL | | SCALE | | DRAWN BY | | DATE | | PART NO. | | REV. | |
|----------------------------------------------------------|--|------------|--|------------|--|------------|--|-------------|--|--------------------|--|----------------------------|--|
| COMMERCIAL VAC - 3 MOTOR, 2 DOOR, SNGL. HOSE, POST MOUNT | | | | | | JOHN F | | 10/14/2014 | | 9237 | | C | |
| UNSPECIFIED TOLERANCES | | 1 PL ±.030 | | 2 PL ±.010 | | 3 PL ±.003 | | ANGLE ±1.0° | | CEDAR RAPIDS, IOWA | | J.E. ADAMS INDUSTRIES, LTD | |

PART NO. 9237LD-DH



| BILL OF MATERIALS | | | |
|-------------------|-----------------------------------------|-------------------------------------------------------|-----|
| ITEM | PART NUMBER | DESCRIPTION | QTY |
| 13 | 5647D2 | RIVET - 1/8 SS POP | 16 |
| 14 | 5647D8 | RIVET - 3/16 SS POP | 14 |
| 17 | 5901D1 | WIRE NUT, YELLOW | 1 |
| 18 | 5901D2 | WIRE NUT, RED | 2 |
| 20 | 6082 | BAG 9 X 12 | 1 |
| 21 | 8047 | PLASTIC BAG | 1 |
| 26 | 8081 | CABLE TIE MOUNT | 3 |
| 27 | 8084 | CABLE TIE NYLON | 8 |
| 34 | 8427-1 | DECAL, VACUUM | 1 |
| 40 | 8631 | 11 X 55 PAD | 1 |
| 48 | 9237 3 MOTOR COMMERCIAL_SSAC_PUSH_START | WIRING DIAGRAM | X |
| 86 | 8057 | MOTOR GASKET | 3 |
| 87 | 8055 | MOTOR, AMETEK 115V | 3 |
| 88 | 8076 | FILTER BAG | 4 |
| 89 | 8108 | #10 x 1/2 TAP SCREW | 6 |
| 90 | 8505-7 | COVER, CONTROL PLATE | 1 |
| 91 | 8615-5W | CLEANOUT DOOR WELDMENT | 2 |
| 92 | 8159 | DOOR GASKET | 2 |
| 93 | 8153-1 | LATCH, CLEANOUT DOOR | 4 |
| 94 | B5722-002 | NUT, 3/8-16 UNC HEX LOCK NUT | 4 |
| 95 | 5600D4 | 3/8-16 X 1.5 HHCS | 4 |
| 96 | 5606D22 | WASHER, 3/8 FENDER | 8 |
| 97 | 8605 | PALLET, VAC, 26" X 30.5" | 1 |
| 98 | 5636D1 | #10-24 PHIL. PAN HEAD SCREW | 2 |
| 99 | 2036 | HOSE, 2" X 15' BLACK VACUUM | 1 |
| 100 | 9900-6A | BRACKET COVER ASSEMBLY | 1 |
| 101 | 8726 | PUSH BUTTON | 1 |
| 102 | 8727 | BOOT, RUBBER, PUSHBUTTON | 1 |
| 103 | 5606D7 | FLAT WASHER, .160 ID X .500 OD | 1 |
| 104 | 5627D2 | 6-32 x .63 PD, PH, MS | 1 |
| 105 | 8157 | NUT, #6-32 KEPP NUT STAINLESS | 1 |
| 106 | 8183 | DECAL, "DISCONNECT POWER" | 1 |
| 107 | 8732 | NAMEPLATE SERIAL TAG, UL | 1 |
| 108 | 8754 19RAD | DECAL - ENGLISH/FRENCH/SPANISH, WARN | 1 |
| 109 | 5871b8 | PLUG, VAC BOTTOM 2-1/2" | 8 |
| 110 | 5702D6 | 3/8-16 X .75 TORX SEC. T-45 | 8 |
| 111 | 5603D3 | 3/8 Std NC Nylock Nut | 4 |
| 112 | 8543K-3 | 3 MOTOR LIGHT KIT | 1 |
| 113 | 8925 | FLOURESCENT BULB | 3 |
| 114 | 9236-3W-DH-2 | 3 MOTOR VAC CANISTER W/C, 3MTR, DUAL HOSE, POST MOUNT | 1 |
| 115 | 8306 | 24" PLASTIC DOME | 1 |
| 116 | 5601D13 | SCR, 1/4-20x1/2 PPHSqConeStepZP | 4 |
| 117 | 5603D11 | 1/2 Std NF Nylock Nut | 1 |
| 118 | 8055LEAD-EM | WIRE LEAD, EM VAC MOTOR | 6 |
| 119 | B5996-010 | FUSE, GLR SERIES, 10AMP | 3 |
| 120 | B5997-001 | FUSE HOLDER, 10A MAX | 3 |
| 121 | 5603D1 | 10 Std NC Nylock Nut | 2 |
| 122 | 9217SS5 | TIMER ASSEMBLY, CV POST MOUNT | 1 |
| 123 | 5905D1 | TERM, FORK, #6, 22-18 AWG, INS. | 2 |
| 124 | 5639D1 | RUBBER GROMMET | 1 |
| 125 | 5640D1 | 1/4-20 x 1/2 PHIL PAN HEAD SCREW | 2 |
| 126 | 8586BY | DECAL, PUSH TO START | 1 |

DETAIL A
SCALE 0.12 : 1

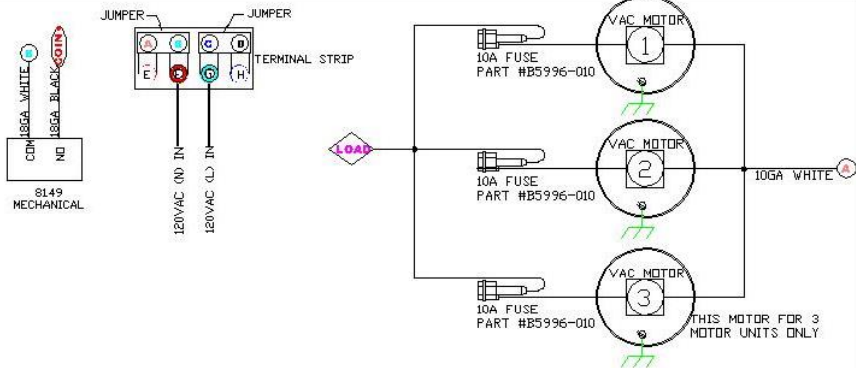
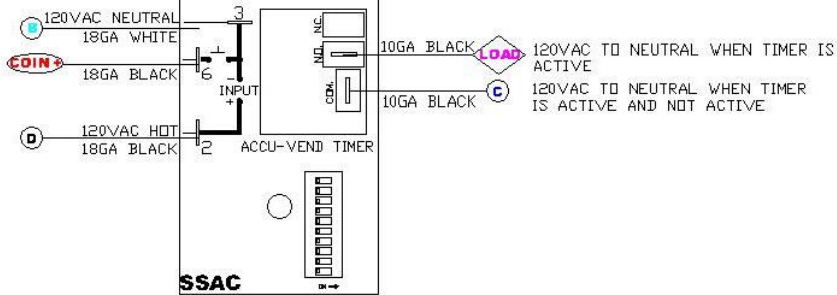
| REV | NO. | DESCRIPTION | DATE | BY |
|-----|------|----------------------------------------------------|--------|----|
| C | 7723 | REMOVE 2081 COUPLER & 8061-720-8 CLAMP | 033016 | JF |
| B | 7586 | REPLACE (2) 5636D1 WITH 5640D1, ADD WIRING DIAGRAM | 101215 | JF |
| A | 7385 | REVISE TIMER PLATE ASSEMBLY | 020215 | JF |

THIS DOCUMENT SHALL NOT BE REPRODUCED NOR SHALL THE INFORMATION THEREIN BE USED BY OR DISCLOSED TO OTHERS EXCEPT AS AUTHORIZED BY J.E. ADAMS INDUSTRIES

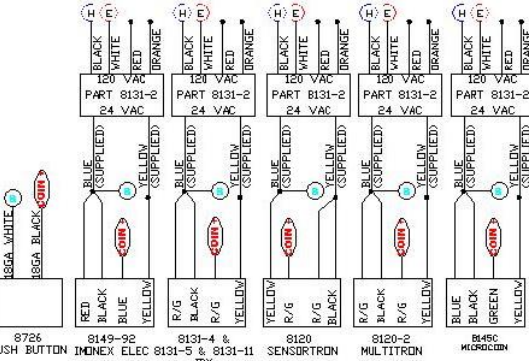
| TITLE | | | |
|---------------------------------------------------------|----------|--------------------|--|
| COMMERCIAL VAC - 3 MOTOR, 2 DOOR, DUAL HOSE, POST MOUNT | | | |
| UNSPECIFIED TOLERANCES | MATERIAL | CEDAR RAPIDS, IOWA | |
| | SCALE | | |
| | DRAWN BY | JOHN F | |
| 3 PL ±.003 | DATE | 10/14/2014 | |
| ANGLE ±1.0° | PART NO. | 9237LD-DH | |
| | REV. | C | |

8221SS4

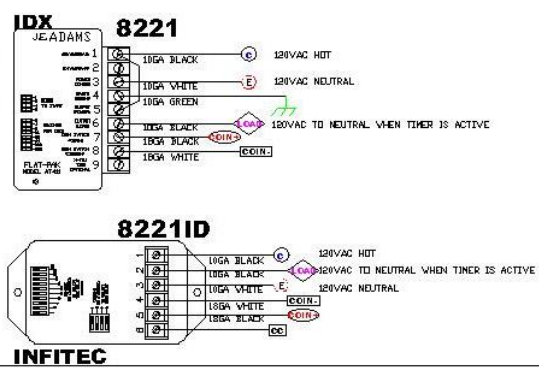
VACUUM STANDARD



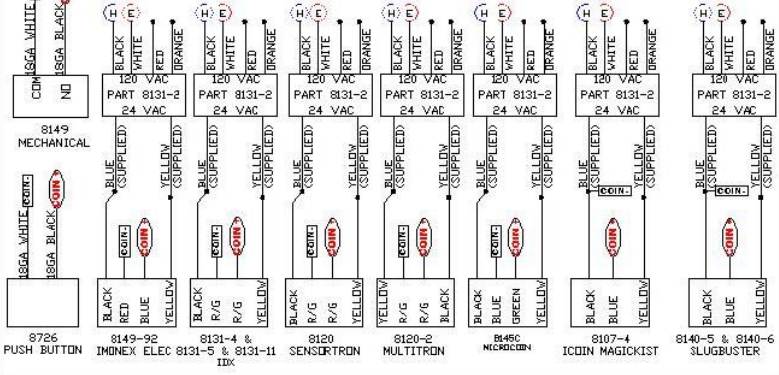
COIN ACCEPTORS SSAC



OPTIONAL TIMERS



COIN ACCEPTORS IDX & INFITEC



IMPORTANT INFORMATION

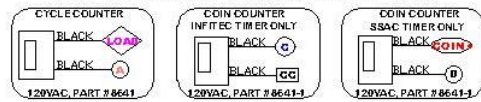
!! IMPORTANT !!
 TERMINAL STRIP IS ON BACK SIDE OF TIMER PLATE IN LOCK BOX. FIELD WIRING MUST COMPLY WITH LOCAL AND NATIONAL ELECTRICAL CODES
20AMP SERVICE IS REQUIRED FOR 2 MOTOR UNIT

!! IMPORTANT !!
 TERMINAL STRIP IS ON BACK SIDE OF TIMER PLATE IN LOCK BOX. FIELD WIRING MUST COMPLY WITH LOCAL AND NATIONAL ELECTRICAL CODES
30AMP SERVICE IS REQUIRED FOR 3 MOTOR UNIT

LIGHTED DOME




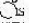
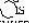
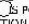
OPTIONAL COUNTERS

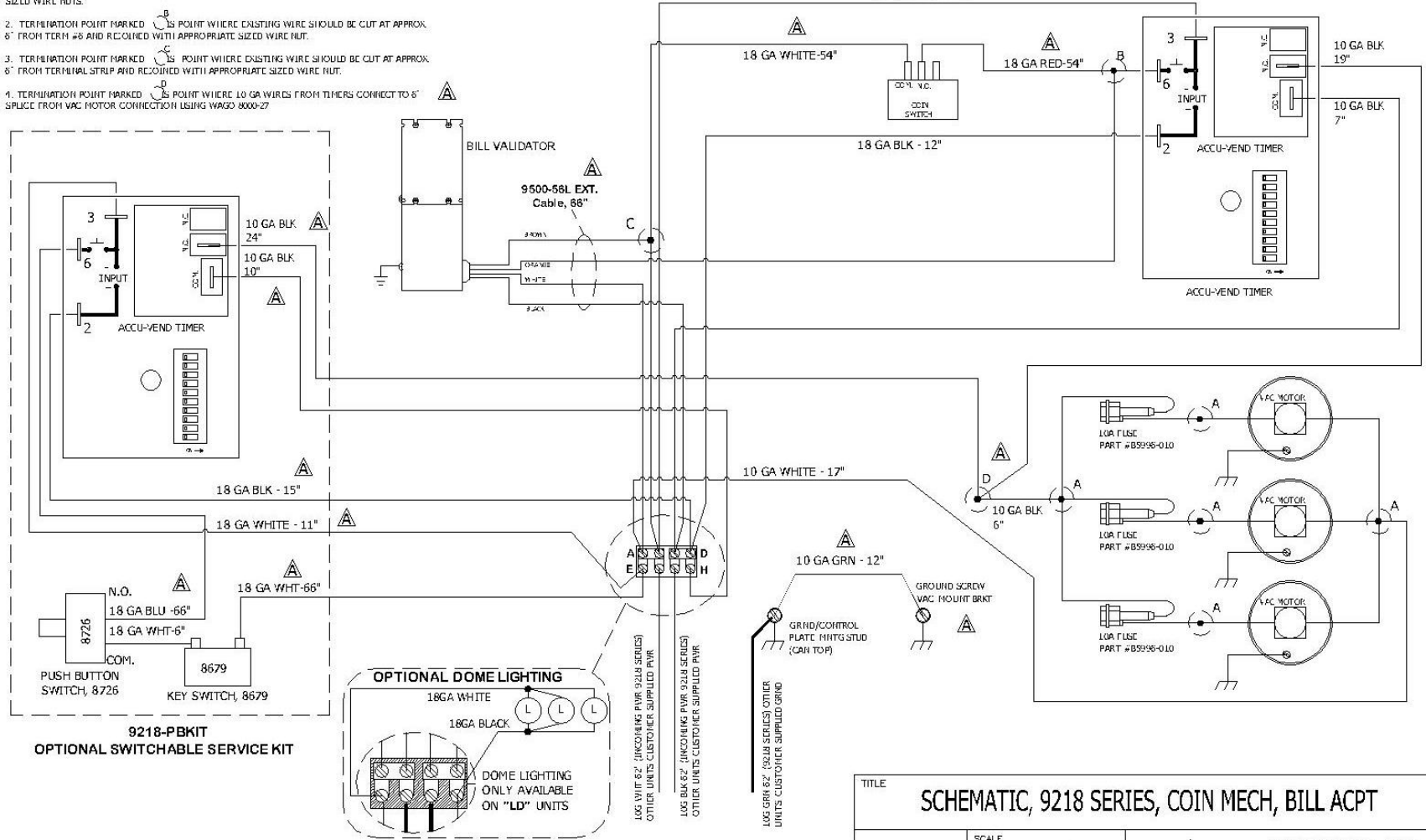


| REV | NO. | DESCRIPTION | DATE | BY |
|-----|------|--------------------------------------------------------|----------|----|
| B | 8142 | CHANGED WIRE CONFIGURATION OF SENSORTRON | 12-20-17 | CK |
| A | 7689 | SPLIT COIN ACCEPTOR FOR USE WITH SSAC OR IDX & INFITEC | 2-23-16 | CK |


| | | | | |
|----------------------------------------------------------------------------------------------------------------------------------------------------------|-----------------------------|------------------------|-------------------------------------------------------------------------------|-----------------------------|
| THIS DOCUMENT SHALL NOT BE REPRODUCED NOR SHALL THE INFORMATION THEREIN BE USED BY OR DISCLOSED TO OTHERS EXCEPT AS AUTHORIZED BY J.E. ADAMS INDUSTRIES. | | CEDAR RAPIDS, IOWA | UNSPECIFIED TOLERANCES 1 PL ±.030 2 PL ±.010 3 PL ±.002 ANGLE 1:0 | TITLE VACUUM 120V |
| DRAWN BY: CHAD K. DATE: 12/16/15 SCALE: NONE REL. FOR PROD. | PART NO. VACUUM 120V | | NATIONAL: - PART NO. VACUUM 120V REV. LEVEL: B | |

| ITEM NO. | PART NO. | DESCRIPTION | QTY. |
|----------|----------|-------------|------|
|----------|----------|-------------|------|

- NOTES:
1. TERMINATION POINTS MARKED  ARE POINTS WHERE WIRES ARE JOINED WITH APPROPRIATE SIZED WIRE NUTS.
 2. TERMINATION POINT MARKED  IS POINT WHERE EXISTING WIRE SHOULD BE CUT AT APPROX. 6" FROM TERM #6 AND RECOILED WITH APPROPRIATE SIZED WIRE NUT.
 3. TERMINATION POINT MARKED  IS POINT WHERE EXISTING WIRE SHOULD BE CUT AT APPROX. 6" FROM TERMINAL STRIP AND RECOILED WITH APPROPRIATE SIZED WIRE NUT.
 4. TERMINATION POINT MARKED  IS POINT WHERE 10 GA WIRES FROM TIMERS CONNECT TO 6" SPLICE FROM VAC MOTOR CONNECTION USING WAGO 8000-27



TITLE **SCHEMATIC, 9218 SERIES, COIN MECH, BILL ACPT**

| | | | | | |
|-----------------------------------------------------------------------------------|----------------|--------|---------------------------------------------------------------------------------------|--------------------|--------|
| UNSPECIFIED TOLERANCES FRACT. ±1/32 2 PL ±.020 3 PL ±.010 ANGLE ±1.0° | SCALE | - |  | CEDAR RAPIDS, IOWA | |
| | DRAWN BY | MWS | | | |
| | DATE | 2/1/16 | PART NO. | S9218-CM-BA | REV. A |
| | REL. FOR PROD. | | | | |

| REV | NO. | DESCRIPTION | DATE | BY |
|-----|------|----------------------------------|--------|-----|
| A | 7735 | MODIFIED WIRE LENGTHS, CNG NOTES | 4/6/16 | MWS |
| - | 7678 | RELEASED | 2/9/16 | MWS |